

# GÜÇLÜ BİR GELECEK İÇİN STRONGER FOR THE FUTURE



[www.activent.com.tr](http://www.activent.com.tr)



## ACTIVENT®

ÜRÜN KATALOĞU  
PRODUCT CATALOGUE

# 3 RADYAL FANLAR RADIAL FANS



## RCRD

GERİYE EĞİMLİ ve SEYREK KANATLI, ÇİFT EMİŞLİ,  
HÜCRE İÇ FANI RADYAL FANLAR

DOUBLE SUCTION, CELL INTERNAL FAN RADIAL  
FANS (BACKWARD CURVED)

**RCRD** serisi fanlar, çift emişli geriye eğimli seyrek kanatlı radyal fanlardır. Yüksek verimli aşırı yüklemeye 4.500 m<sup>3</sup>/h ile 47.000 m<sup>3</sup>/h debileri arasında ticari ve endüstriyel HVAC sistemlerinde emme ve basma uygulamaları için kullanılabilirler. Düşük enerji ile maksimum verim sağlarlar.

### MALZEME

Gövdesi; Galvaniz sacdan üretilmiştir. Radyal Fan, geriye eğimli kanat yapısında ST-37 DKP sacdan elektrostatik boyalı imal edilmiştir. Mil; ST-45 çelikten imal edilmiştir.

### HIZ KONTROLÜ

Kayış kasnak sistemiyle elde edilir.

### KULLANIM ALANLARI

Hücreli aspiratörler, merkezi klima üniteleri, iş yerleri, ofisler, kafeteryalar, restoranlar, toplantı salonları, süpermarketler vb. sessizlik ve konfor gerektiren yerlerde tercih edilir.

**RCRD** series fans, double suction reverse inclined rare blade radial fans. High efficiency overload Flow rates of 4.500 m<sup>3</sup>/h and 47.000 m<sup>3</sup>/h between commercial and industrial HVAC suction and compression in systems they can be used for applications. Maximum efficiency with low energy they provide.

### MATERIAL

Its body is made of galvanized sheet metal. The Radial Fan is made of electrostatically painted sheet metal ST-37 DKP in a backward-inclined wing structure. The shaft is made of ST-45 steel.

### SPEED CONTROL

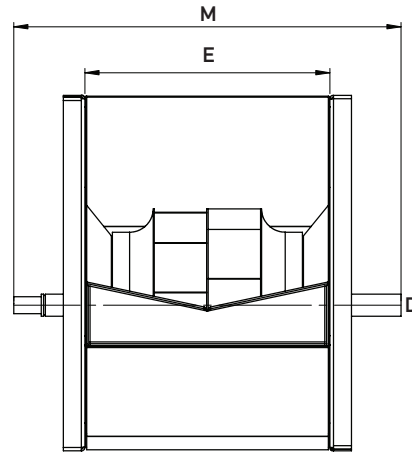
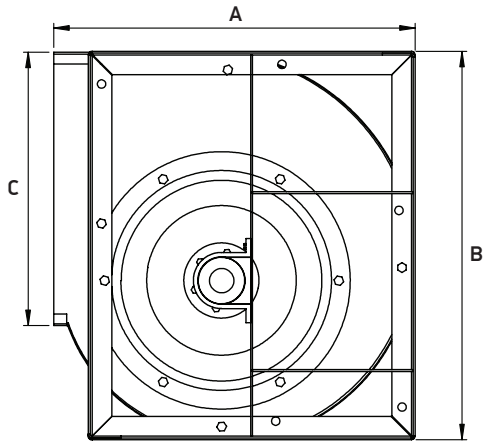
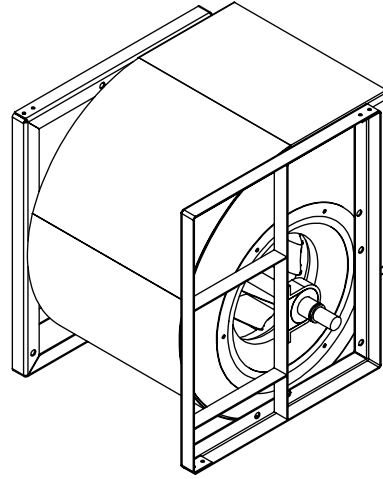
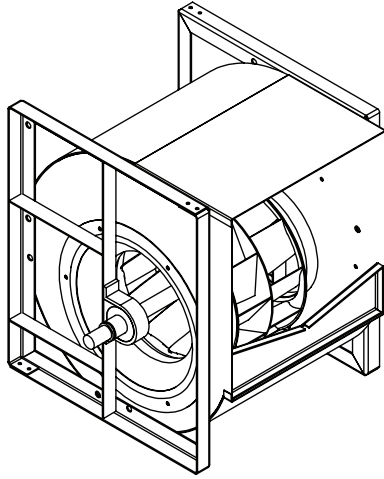
It is obtained with a belt-pulley system.

### USAGE AREAS

Cell aspirators, central air conditioning units, workplaces, offices, cafeterias, restaurants, meeting rooms, supermarkets, etc. silence and reserved is preferred.

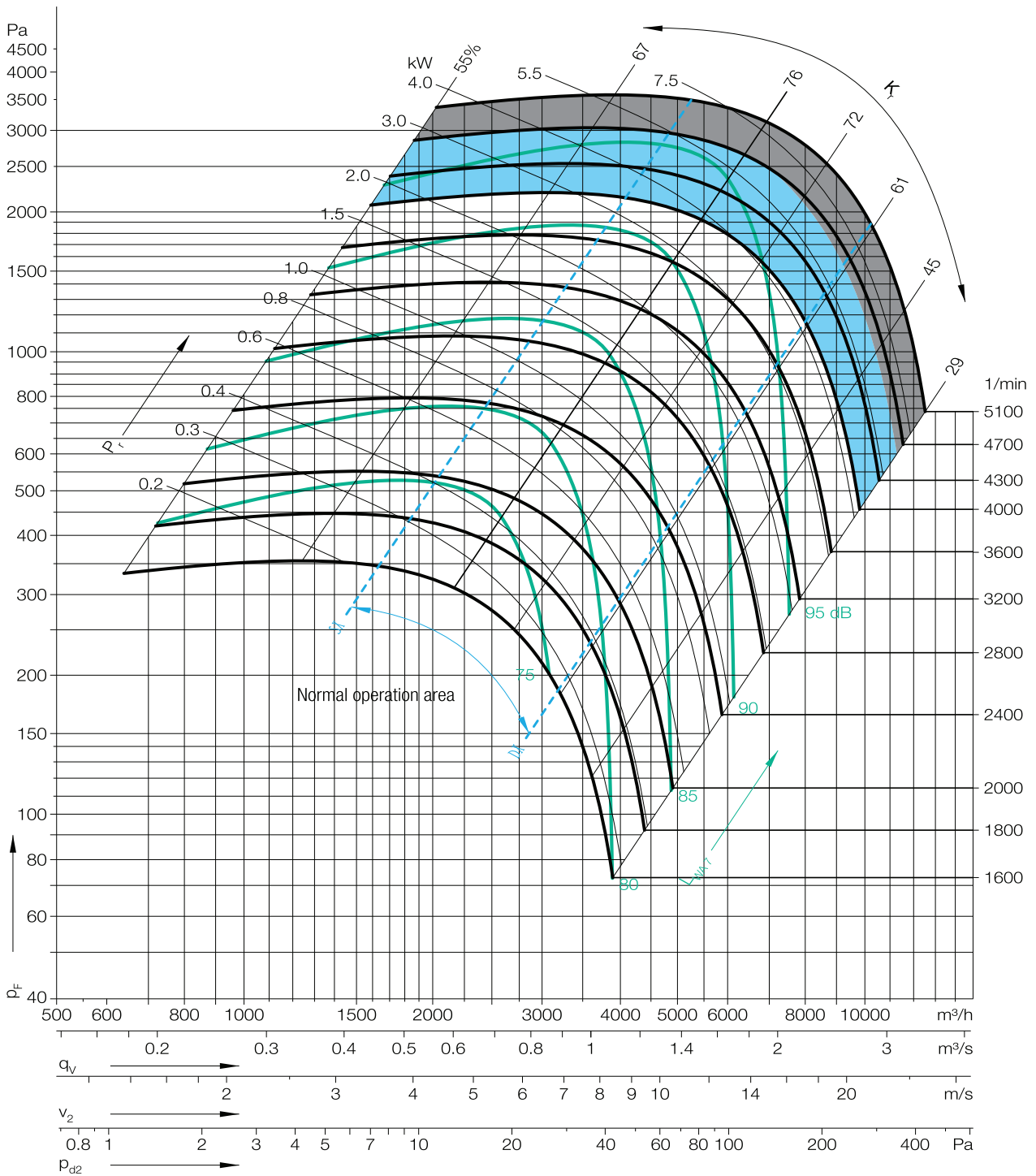
Tip/Kod Type/Code	Maks. Çalışma Şartları / Max. Working Conditions			Max. Debi Air Flow m <sup>3</sup> / h	Max. Basınç Kaybı Pressure Pa
	Voltaj Voltage	Güç Power	Devir Speed		
	(V)	(kW)	(d/d) (rpm)		
RCRD-280	380	5,50	3.800	7.000	2.000
RCRD-315	380	5,50	3.300	9.500	2.000
RCRD-355	380	7,50	3.100	11.900	2.200
RCRD-400	380	7,50	2.500	15.400	2.100
RCRD-450	380	11,0	2.300	19.950	2.000
RCRD-500	380	11,0	2.000	26.900	1.800
RCRD-560	380	15,0	1.850	30.000	1.900
RCRD-630	380	15,0	1.500	37.500	1.600
RCRD-710	380	18,5	1.200	47.000	1.300

TEKNİK ÖLÇÜLER / TECHNICAL DIMENSION



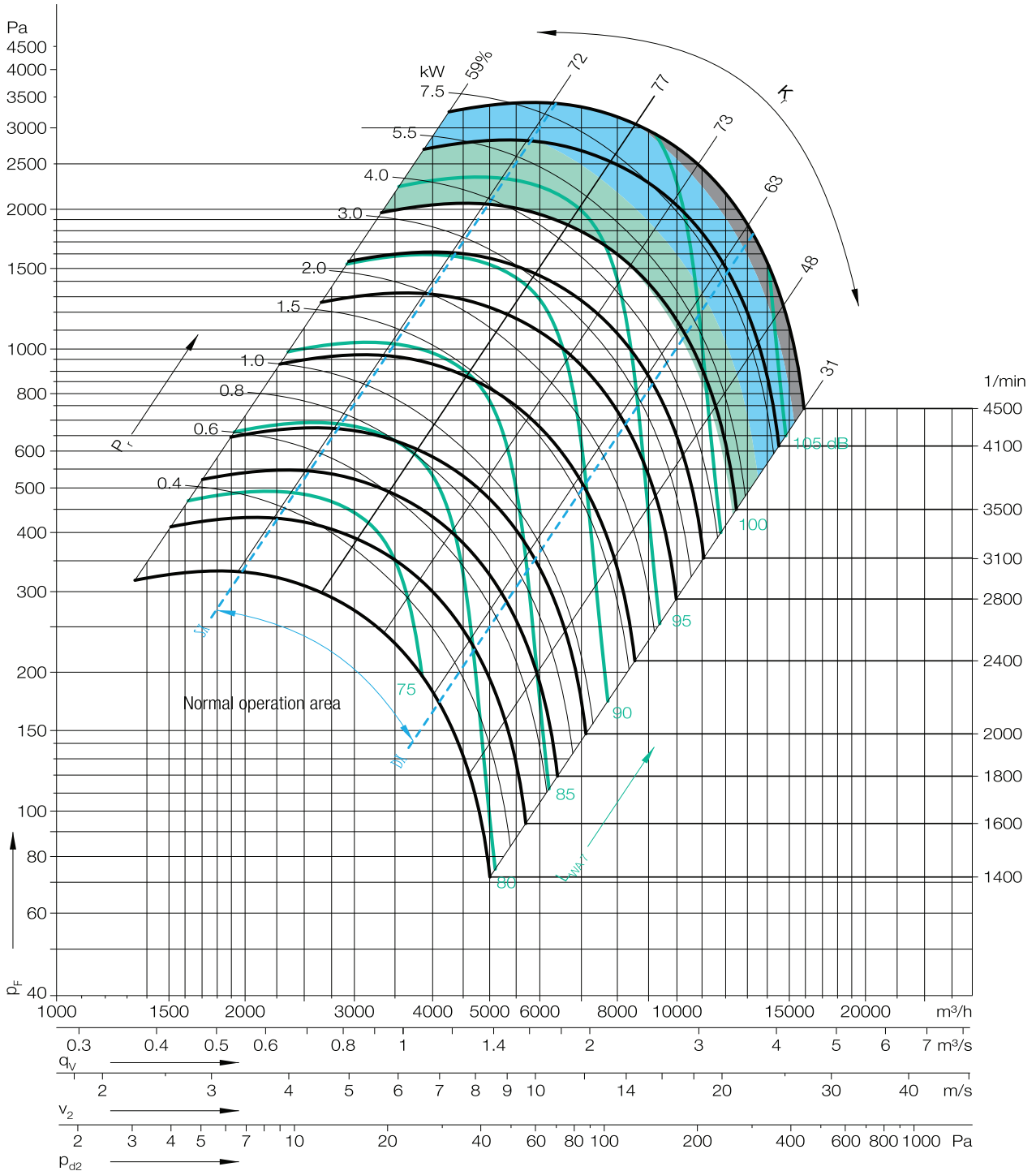
Tip/Kod Type/Code	Ölçüler / Sizes (mm)					
	A	B	C	D	E	M
RCRD-280	466	518	361	Ø 30	361	555
RCRD-315	518	578	404	Ø 30	404	600
RCRD-355	578	655	453	Ø 35	453	675
RCRD-400	649	736	507	Ø 35	507	725
RCRD-450	726	827	569	Ø 40	569	815
RCRD-500	800	918	638	Ø 40	638	885
RCRD-560	891	1.030	715	Ø 50	715	1.000
RCRD-630	996	1.157	801	Ø 50	801	1.085
RCRD-710	1.117	1.303	898	Ø 50	898	1.255

## RCRD - 280

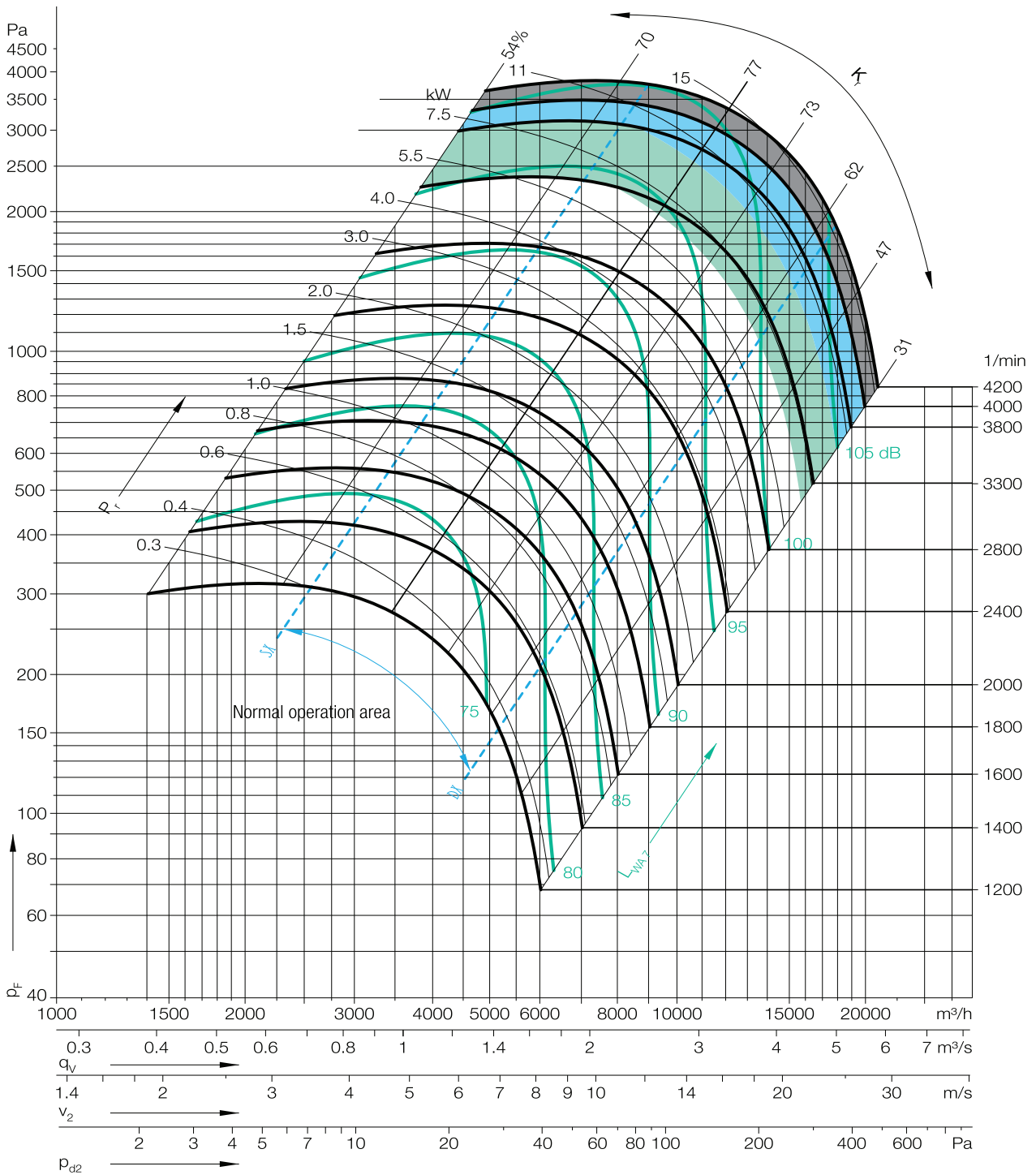




**RCRD - 315**

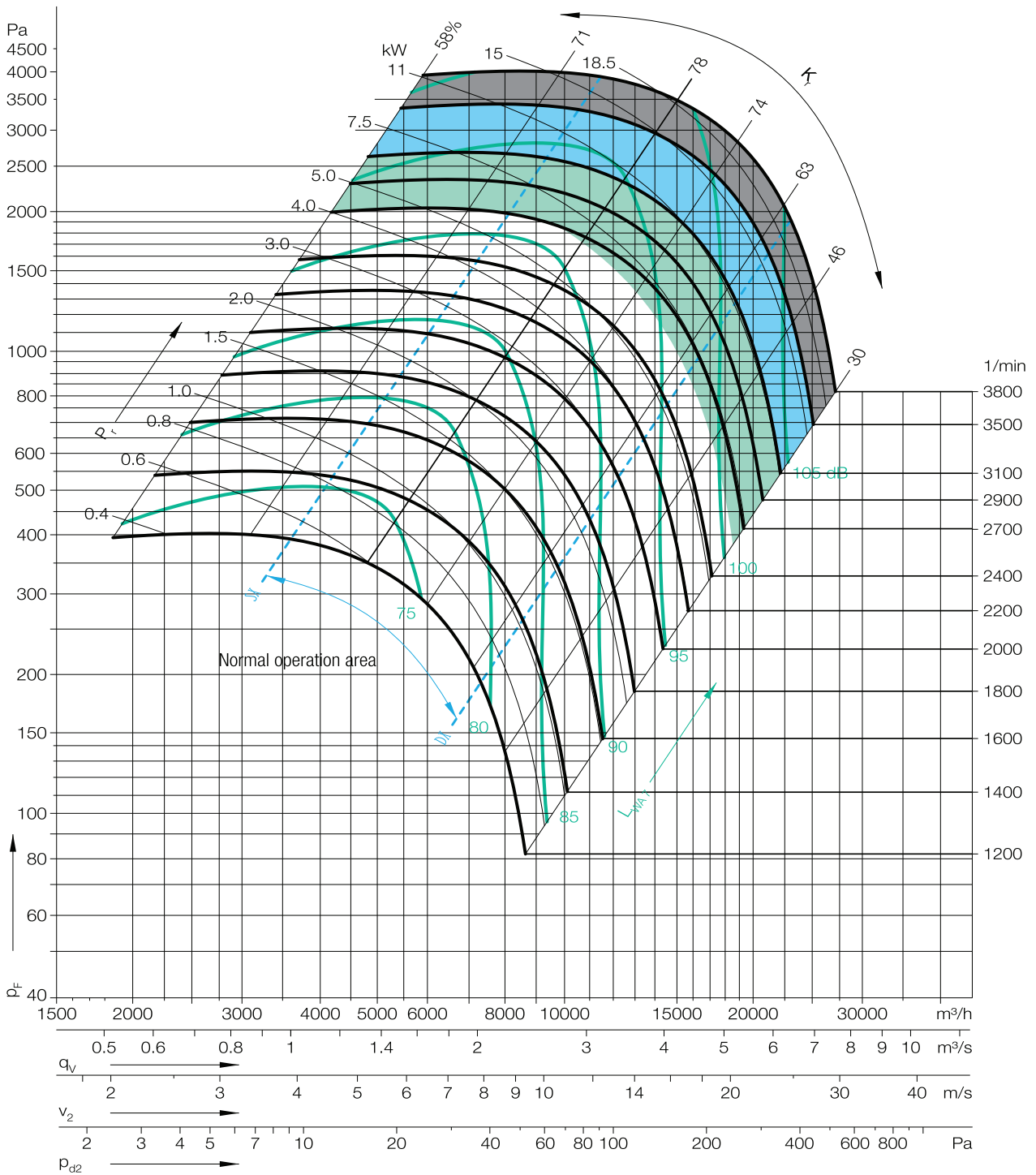


## RCRD - 355

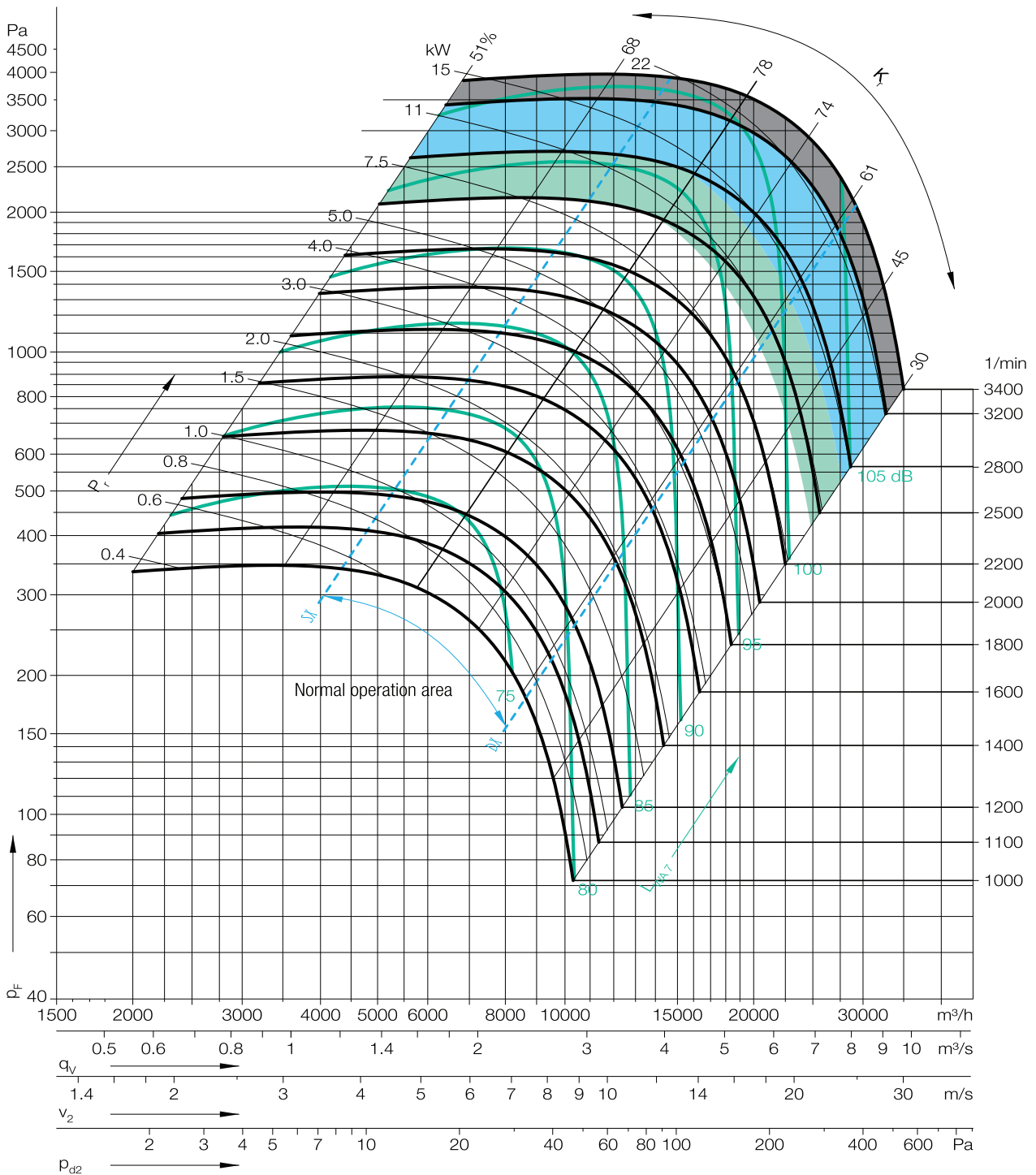




**RCRD - 400**



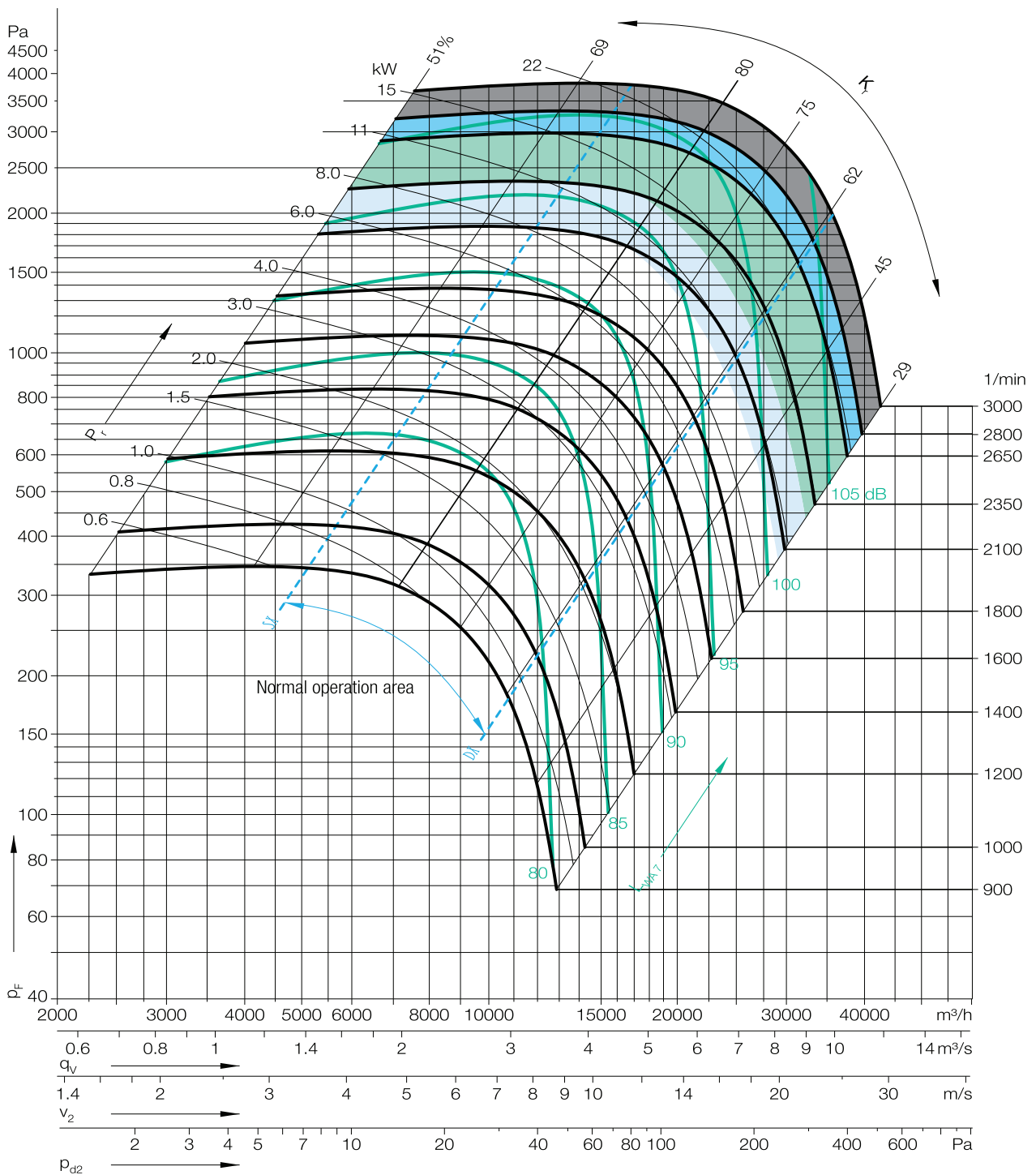
## RCRD - 450







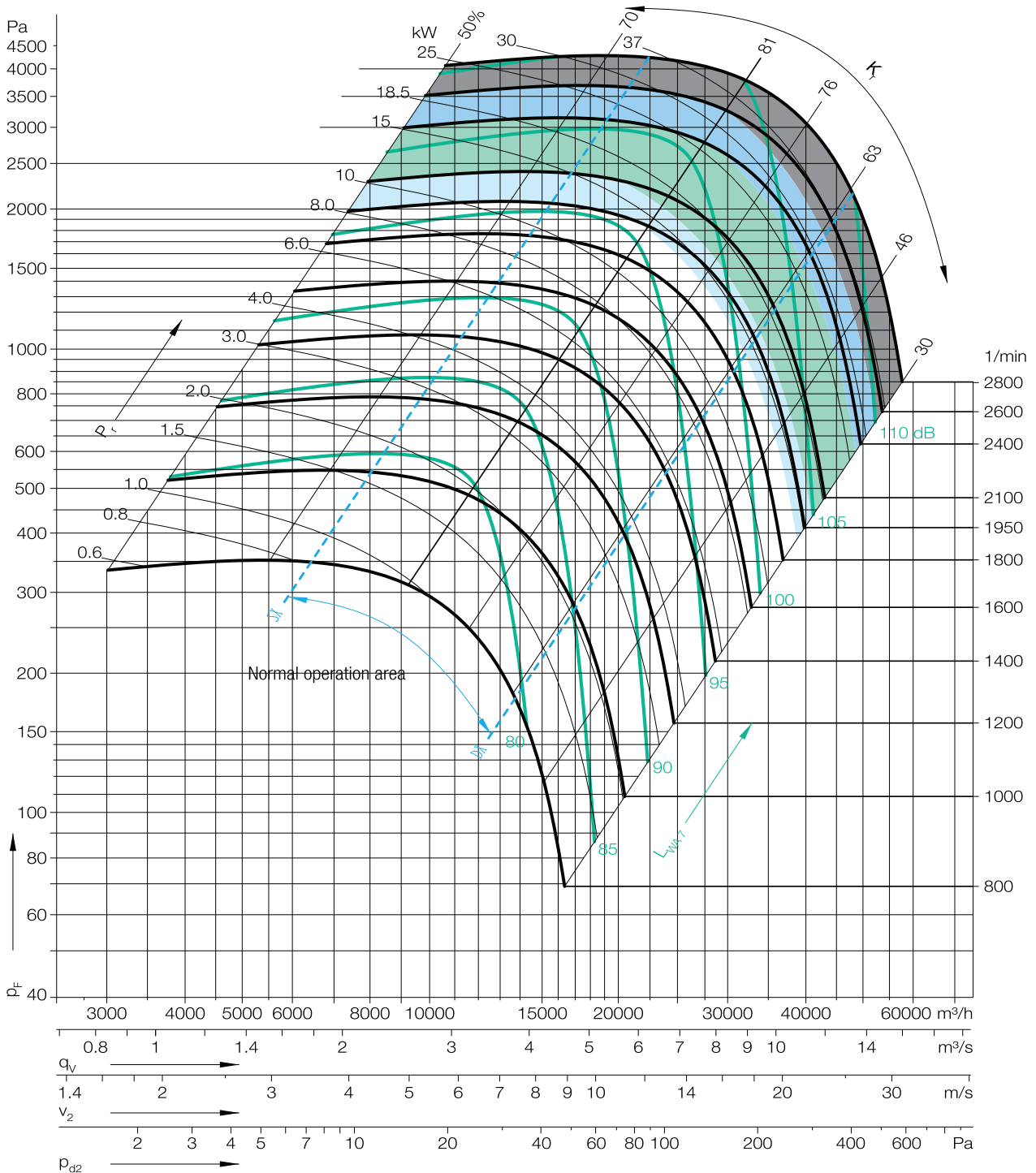
**RCRD - 500**



# 3 RADYAL FANLAR RADIAL FANS

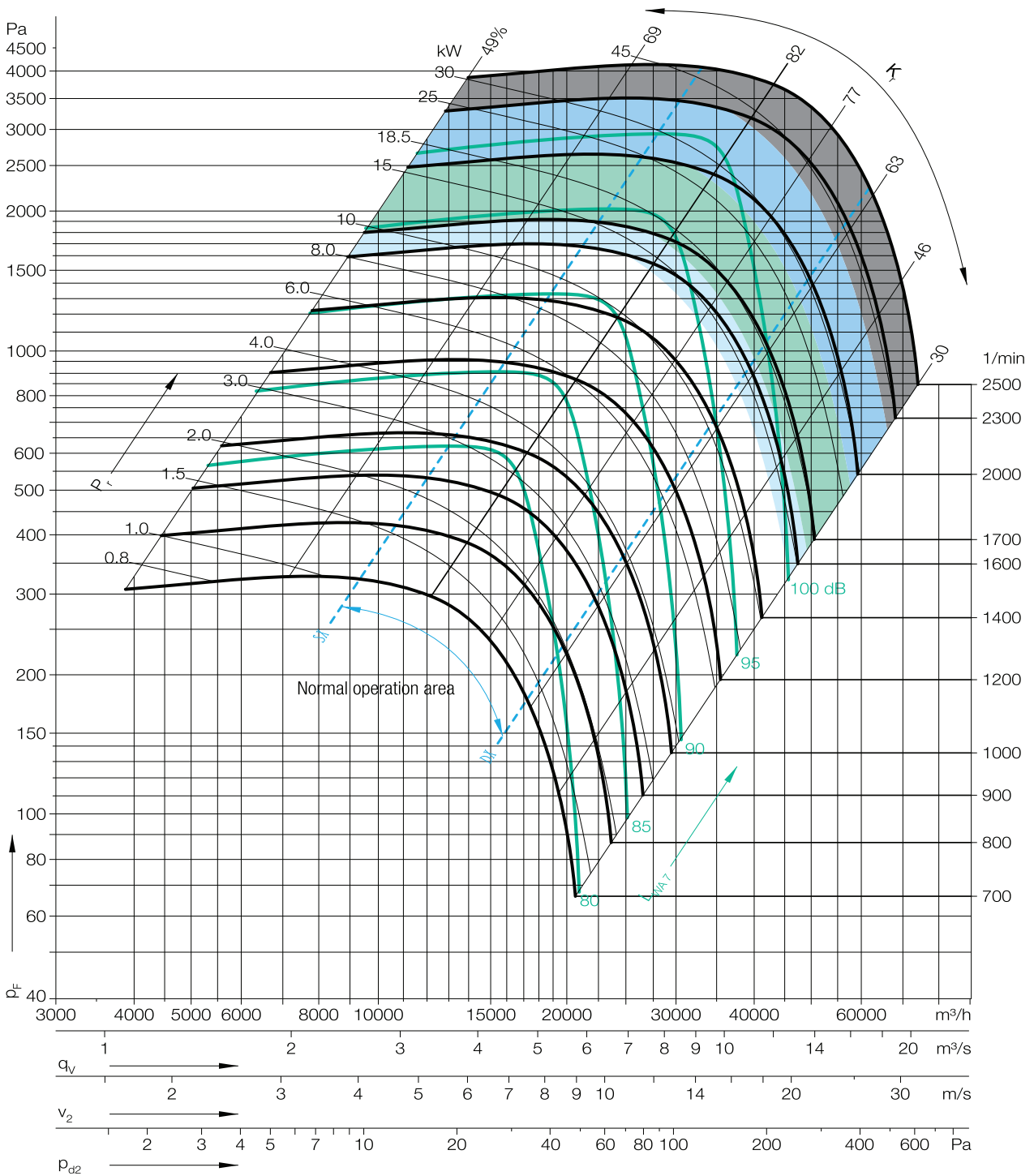


## RCRD - 560



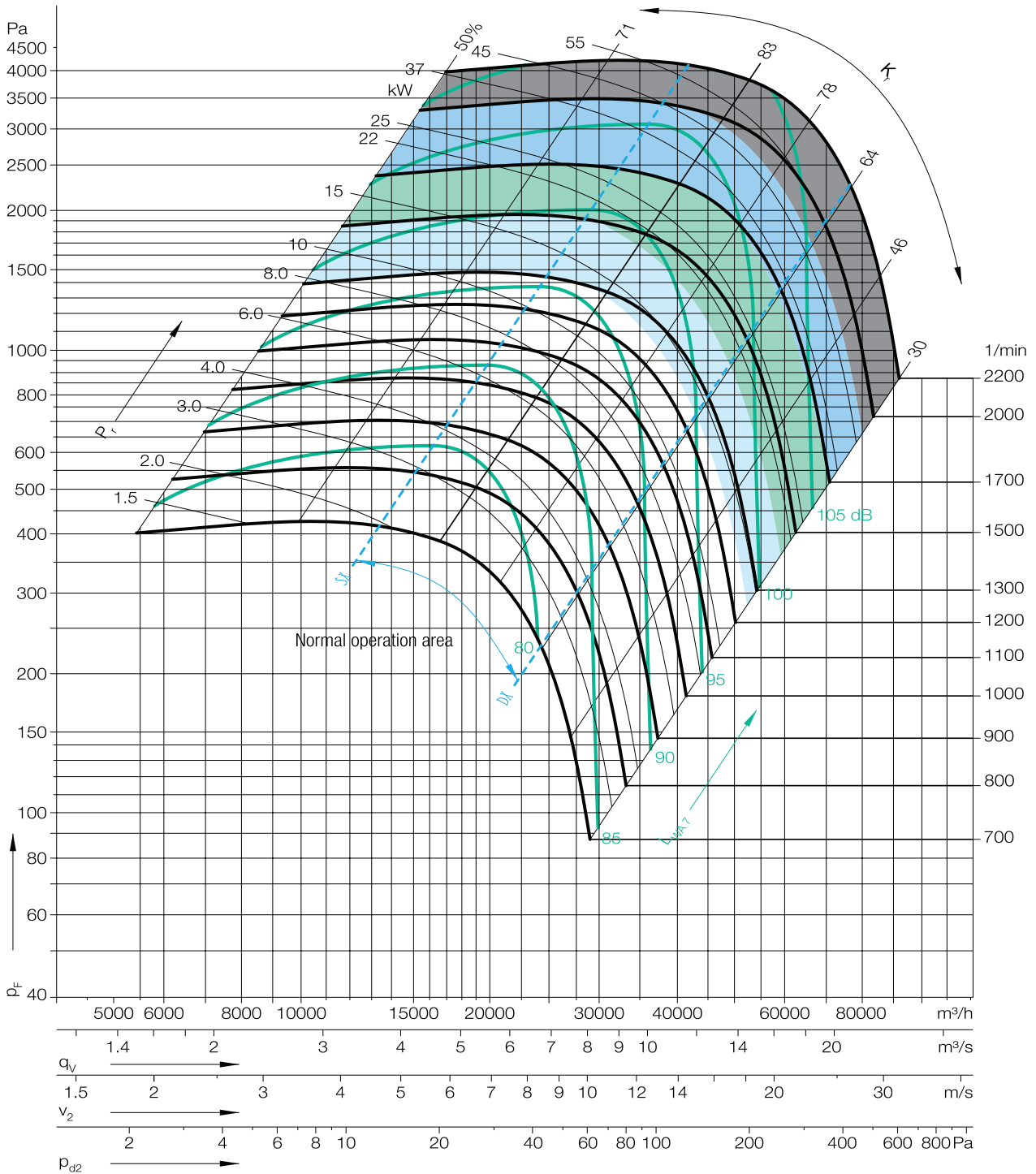


**RCRD - 630**



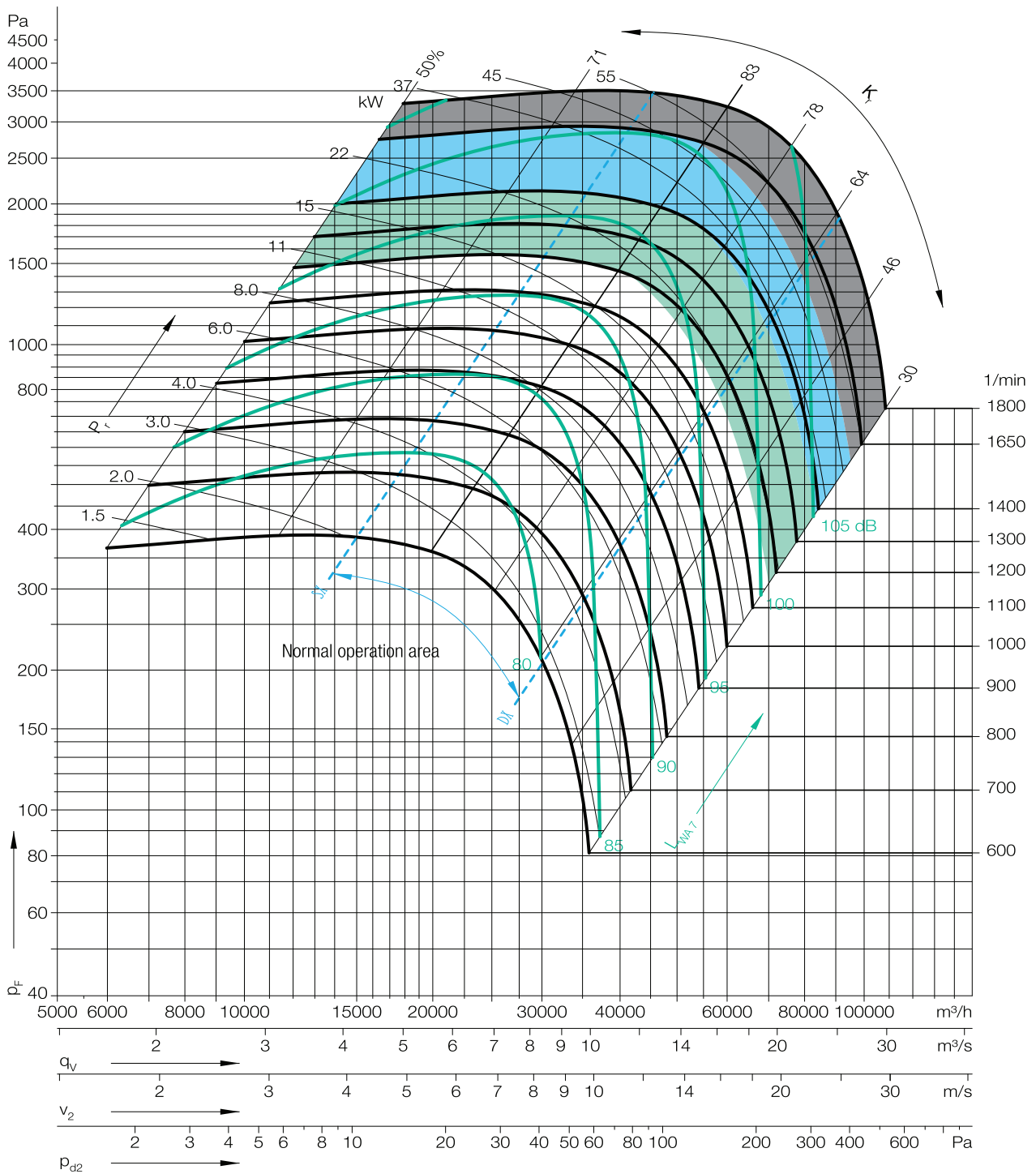
# 3 RADYAL FANLAR RADIAL FANS

## RCRD - 710





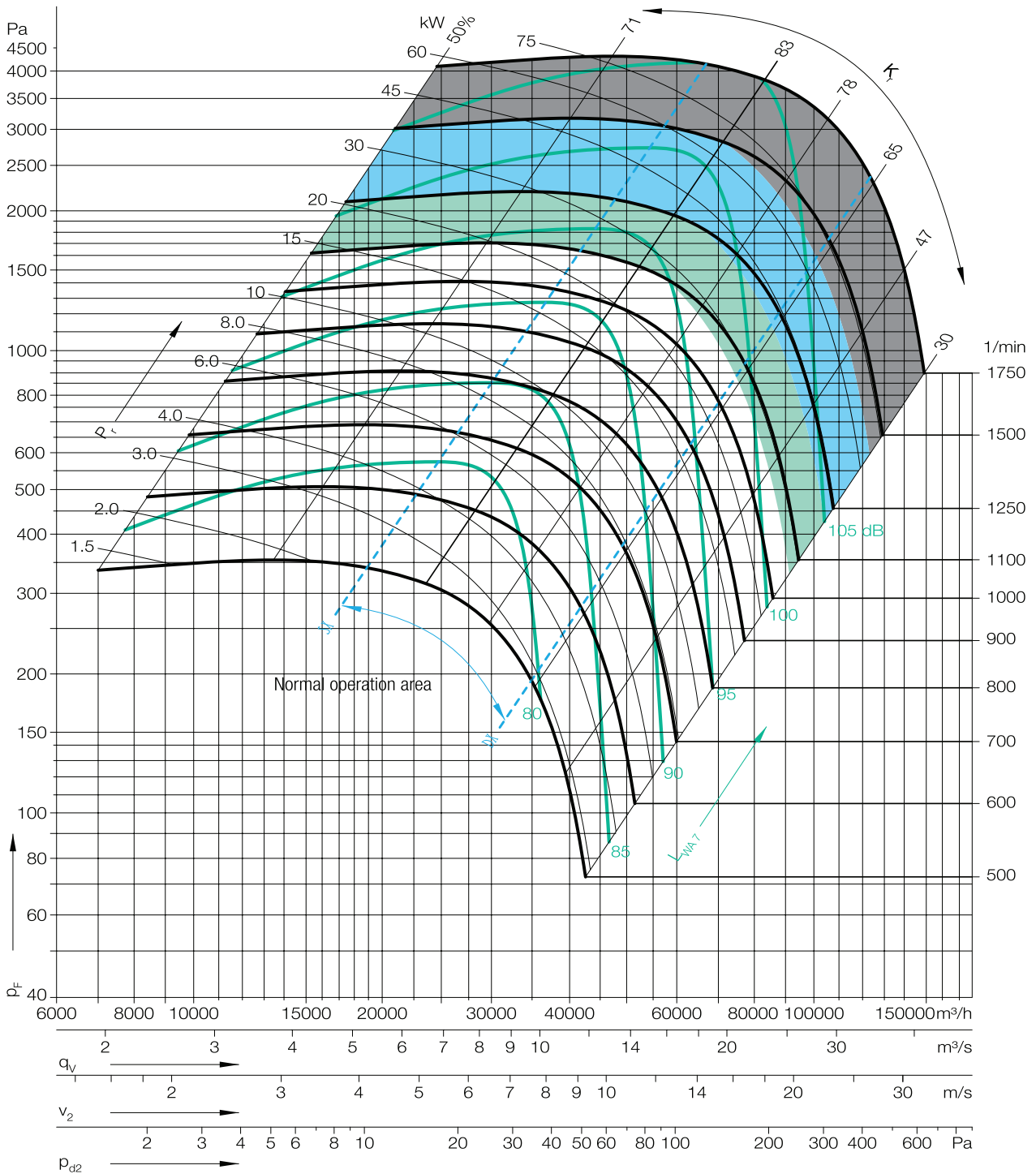
**RCRD - 800**



# 3 RADYAL FANLAR RADIAL FANS

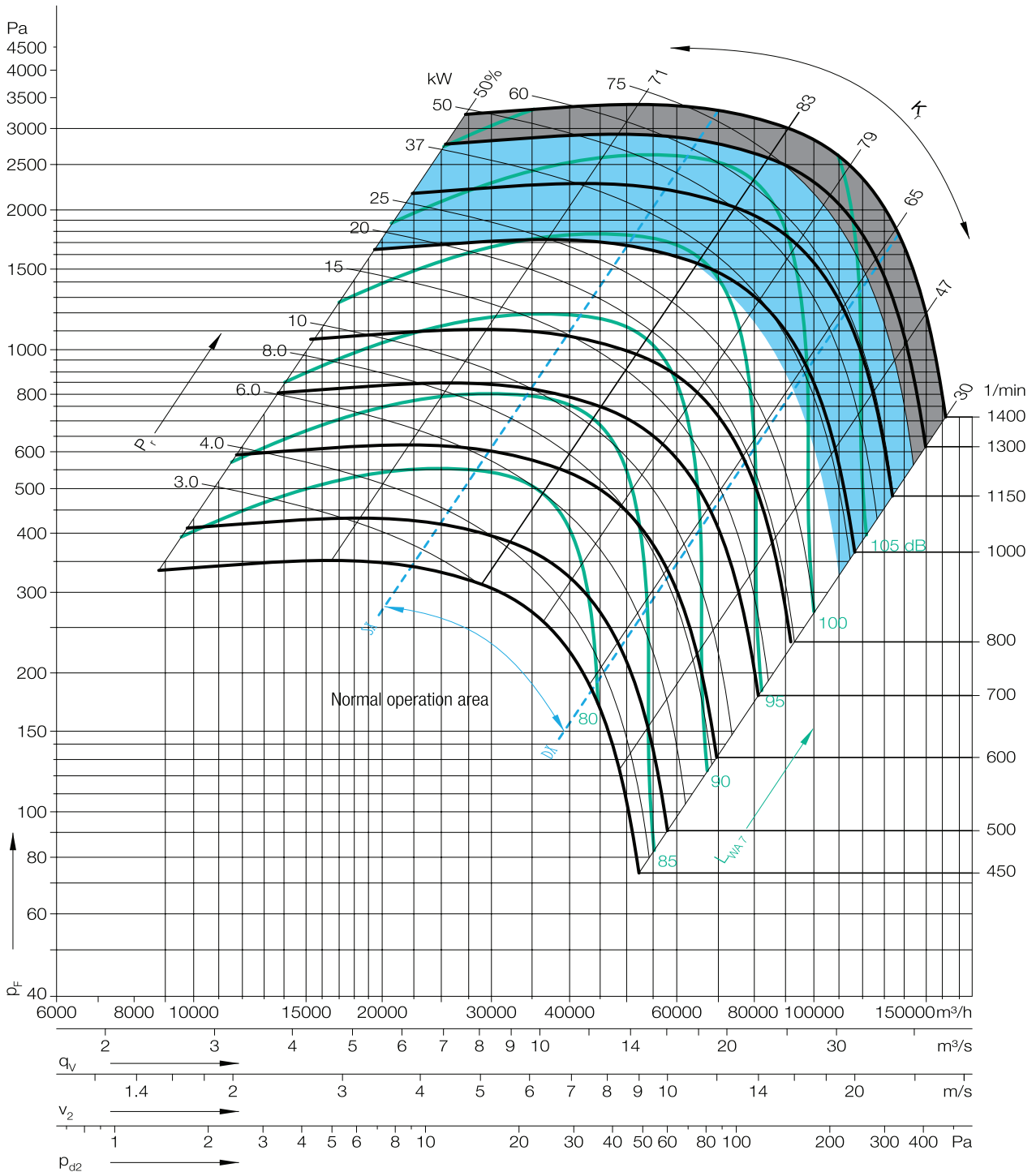


## RCRD - 900





**RCRD - 1000**









**ACTIVENT®**

Halkalı Merkez Mahallesi  
Şehit Yılmaz Özdemir Caddesi  
Sanayi Sokak No: 4  
Küçükçekmece, İstanbul, Türkiye

**P:** +90.212 698 02 25

**P:** +90.212 698 02 26

**P:** +90.212 565 73 03

[info@activent.com.tr](mailto:info@activent.com.tr)

[www.activent.com.tr](http://www.activent.com.tr)

