

GÜÇLÜ BİR GELECEK İÇİN STRONGER FOR THE FUTURE



www.activent.com.tr



ACTIVENT®

ÜRÜN KATALOĞU
PRODUCT CATALOGUE



RCAT

ÖNE EĞİMLİ VE SIK KANATLI, ÇİFT EMİŞLİ,
HÜCRE İÇ FANI RADYAL FANLAR

DOUBLE SUCTION, CELL INTERNAL FAN RADIAL
FANS (BACKWARD CURVED)

RCAT serisi fanlar, çift emişli öne eğimli sık kanatlı radyal fanlardır. Değişik boyutlarda standart olarak üretilmektedir. 3.000 m³/h ile 22.000 m³/h debileri arasında ticari ve endüstriyel HVAC sistemlerinde emme ve basma uygulamaları için kullanılabilirler. Düşük enerji ile maksimum verim sağlarlar.

MALZEME

Gövdesi; Galvaniz sacdan üretilmiştir. Radyal Fan, öne eğimli kanat yapısında galvaniz sacdan imal edilmiştir. Mil; ST-45 çelikten imal edilmiştir. Yataklar; Kendini sürekli yenileyen rulmanlardan imal olup , yatak koruyucuları kauçuktan imal edilir.

HIZ KONTROLÜ

Kayış kasnak sistemiyle elde edilir.

KULLANIM ALANLARI

Hücreli aspiratörler, merkezi klima üniteleri, iş yerleri, ofisler, kafeteryalar, restoranlar, toplantı salonları, süpermarketler vb. sessizlik ve konfor gerektiren yerlerde tercih edilir.

RCAT series fans, double suction front inclined dense bladed radial fans. As standard in different sizes are produced. With 3,000 m³/h Between 22.000 m³/h flow rates commercial and industrial HVAC suction and compression systems They can be used for applications. Maximum efficiency with low energy they provide.

MATERIAL

Body; Radial Fan is made of galvanized sheet with forward-curved blade structure. Shaft; Made of ST-45 steel. Beds ; It is made of self-renewing bearings and bearing protectors are made of rubber.

SPEED CONTROL

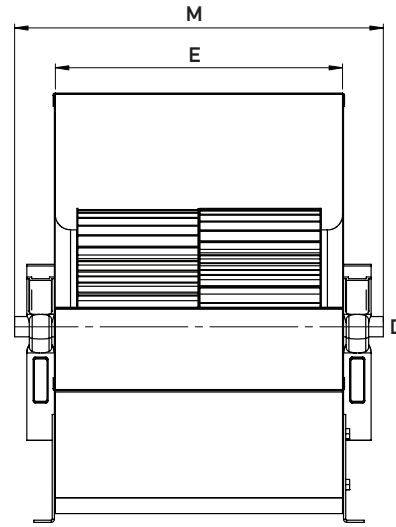
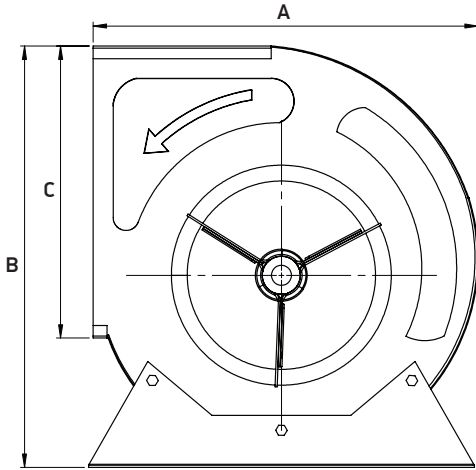
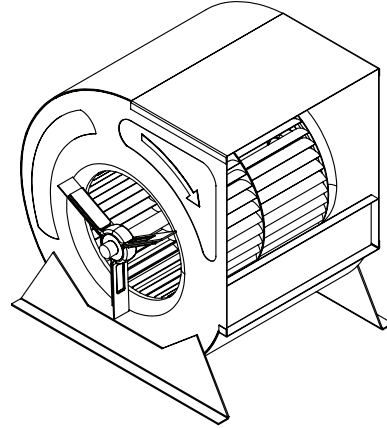
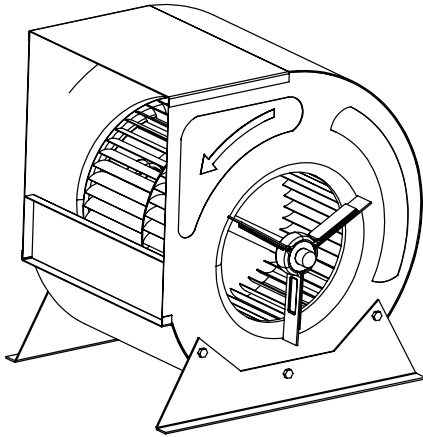
It is obtained with a belt-pulley system.

USAGE AREAS

Cell aspirators, central air conditioning units, workplaces, offices, cafeterias, restaurants, meeting rooms, supermarkets, etc. silence and reserved is preferred.

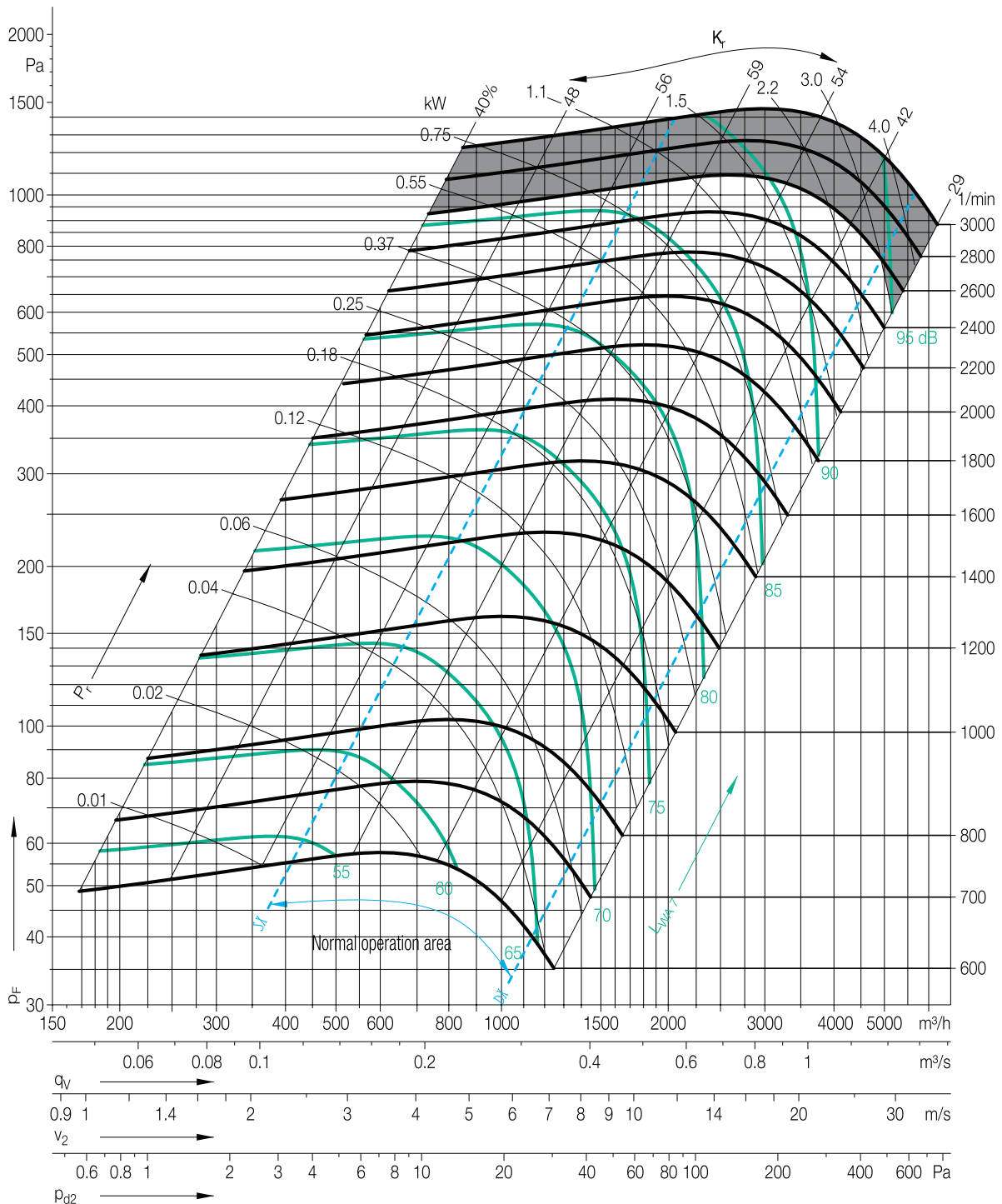
Tip/Kod Type/Code	Maks. Çalışma Şartları / Max. Working Conditions				Max. Debi Air Flow m ³ / h	Max. Basınç Kaybı Pressure Pa
	Voltaj Voltage	Güç Power		Devir Speed		
	(V)	(HP)	(kW)	(d/d) (rpm)		
RCAT-07/07	380	4,00	3,00	2.400	3.000	900
RCAT-09/09	380	4,00	3,00	2.000	5.000	900
RCAT-10/10	380	5,50	4,00	1.800	6.800	1.200
RCAT-12/12	380	7,50	5,50	1.400	9.800	1.000
RCAT-15/15	380	7,50	5,50	1.150	13.000	900
RCAT-18/18	380	10,0	7,50	1.000	20.000	1.000
RCAT-15/15-K	380	10,0	7,50	1.150	15.000	900
RCAT-18/18-K	380	15,0	11,0	1.000	22.000	1.000

TEKNİK ÖLÇÜLER / TECHNICAL DIMENSION



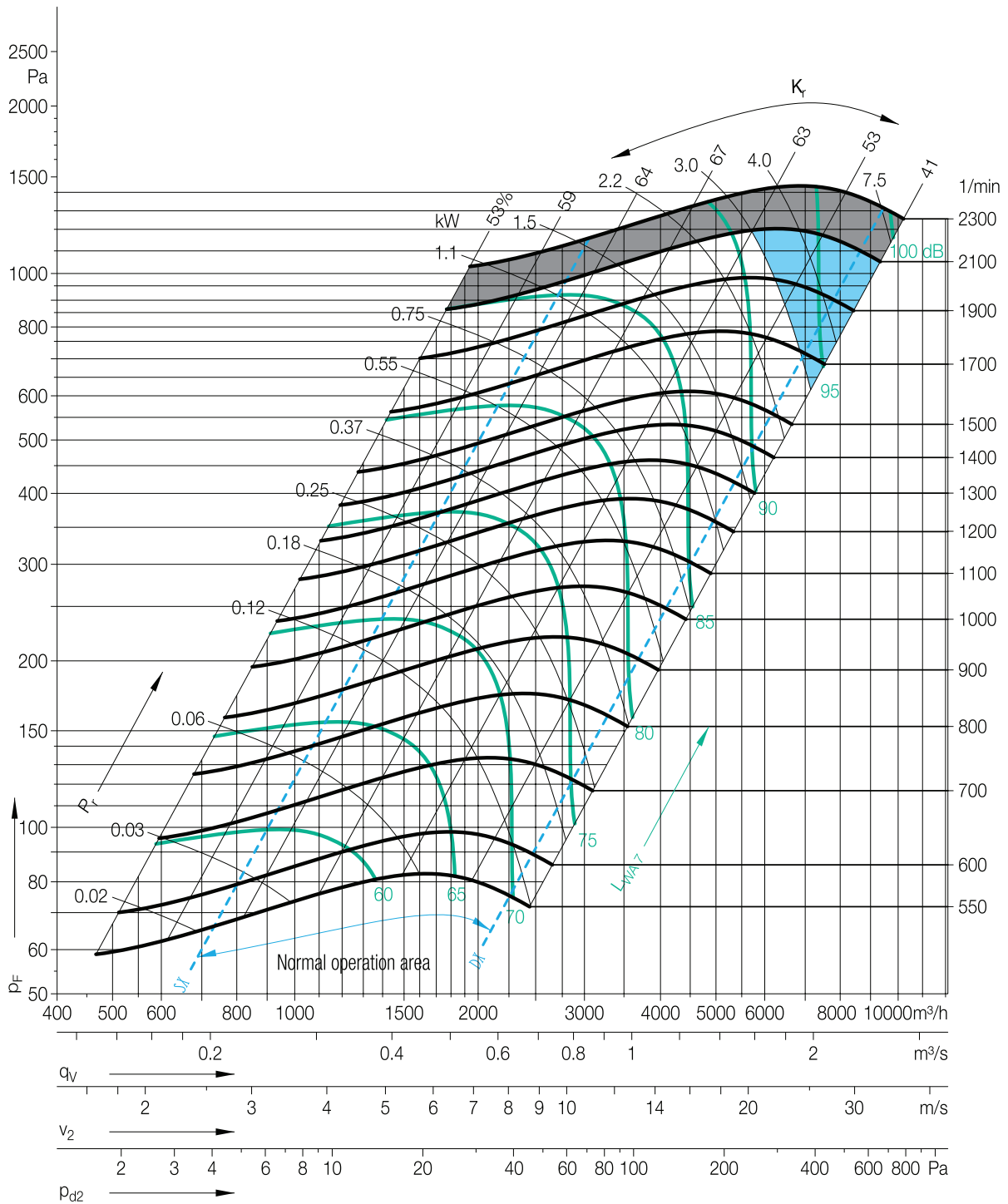
Tip/Kod Type/Code	Ölçüler / Sizes (mm)					
	A	B	C	D	E	F
RCAT-07/07	316	325	208	Ø 20	232	340
RCAT-09/09	380	387	262	Ø 20	298	394
RCAT-10/10	425	443	289	Ø 20	331	420
RCAT-12/12	491	521	341	Ø 25	395	510
RCAT-15/15	569	609	404	Ø 25	471	608
RCAT-18/18	684	739	478	Ø 25	557	694
RCAT-15/15-K	569	609	404	Ø 30	471	608
RCAT-18/18-K	684	739	478	Ø 30	557	694

RCAT - 07 / 07

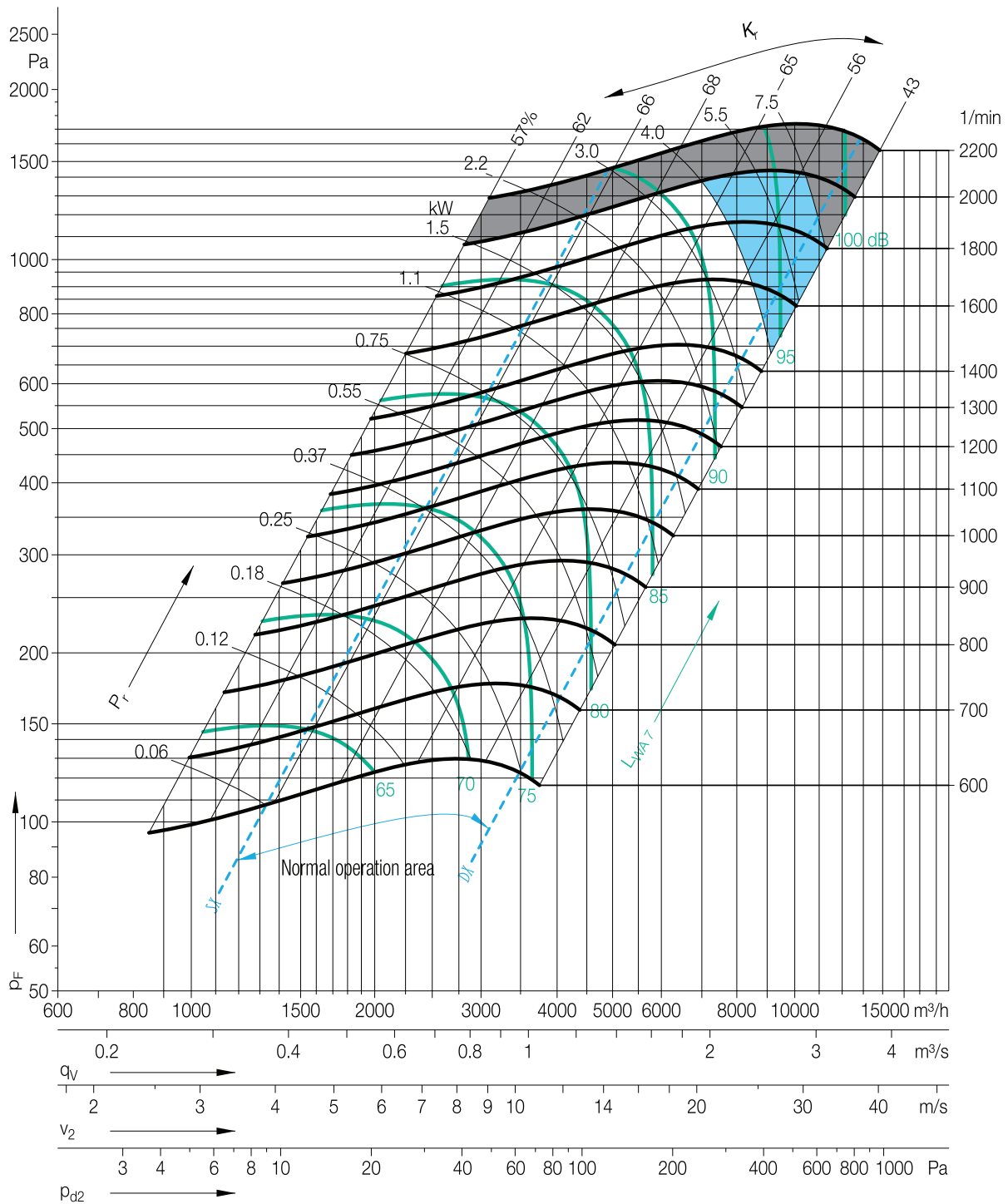




RCAT - 09 / 09

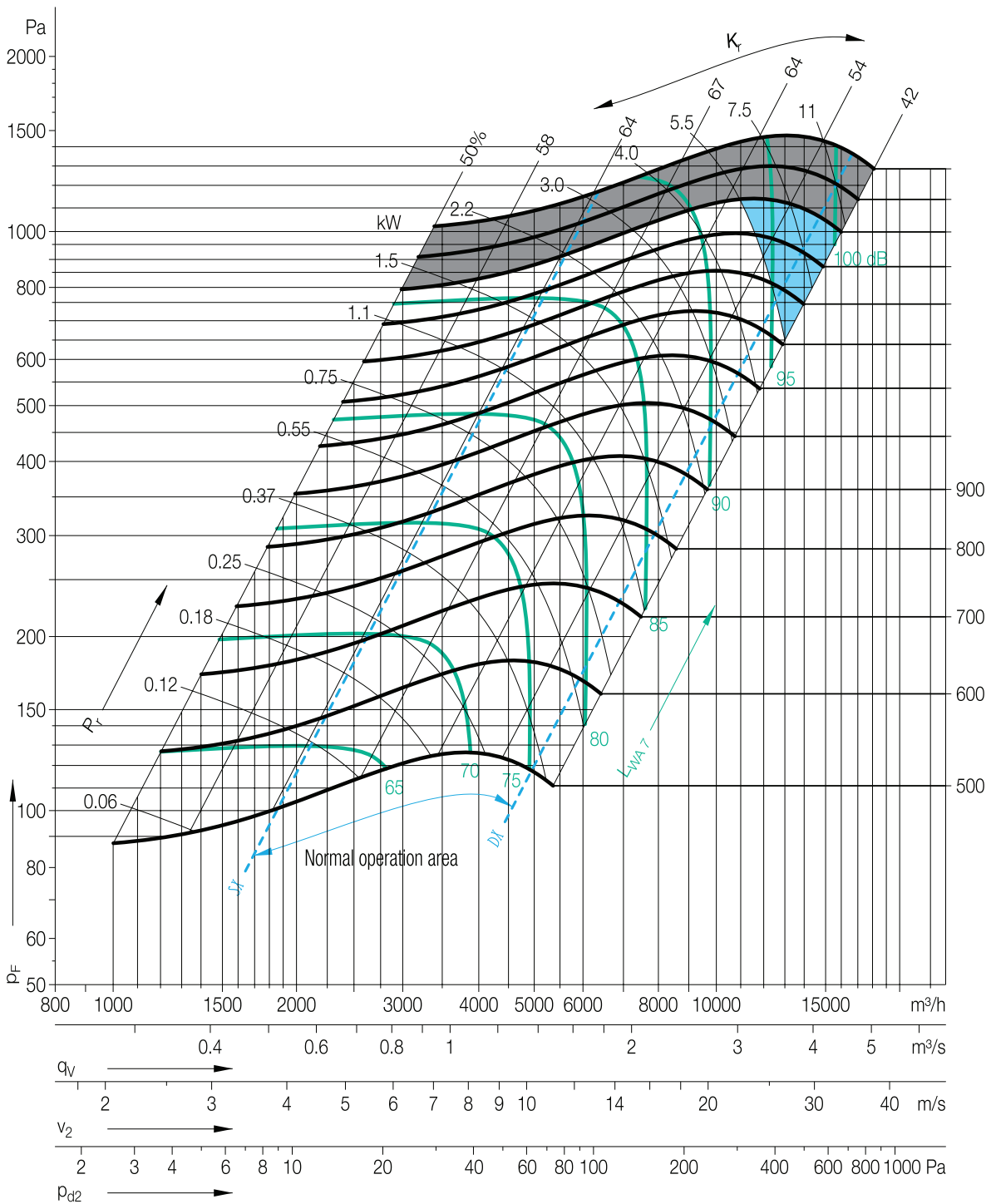


RCAT - 10 / 10

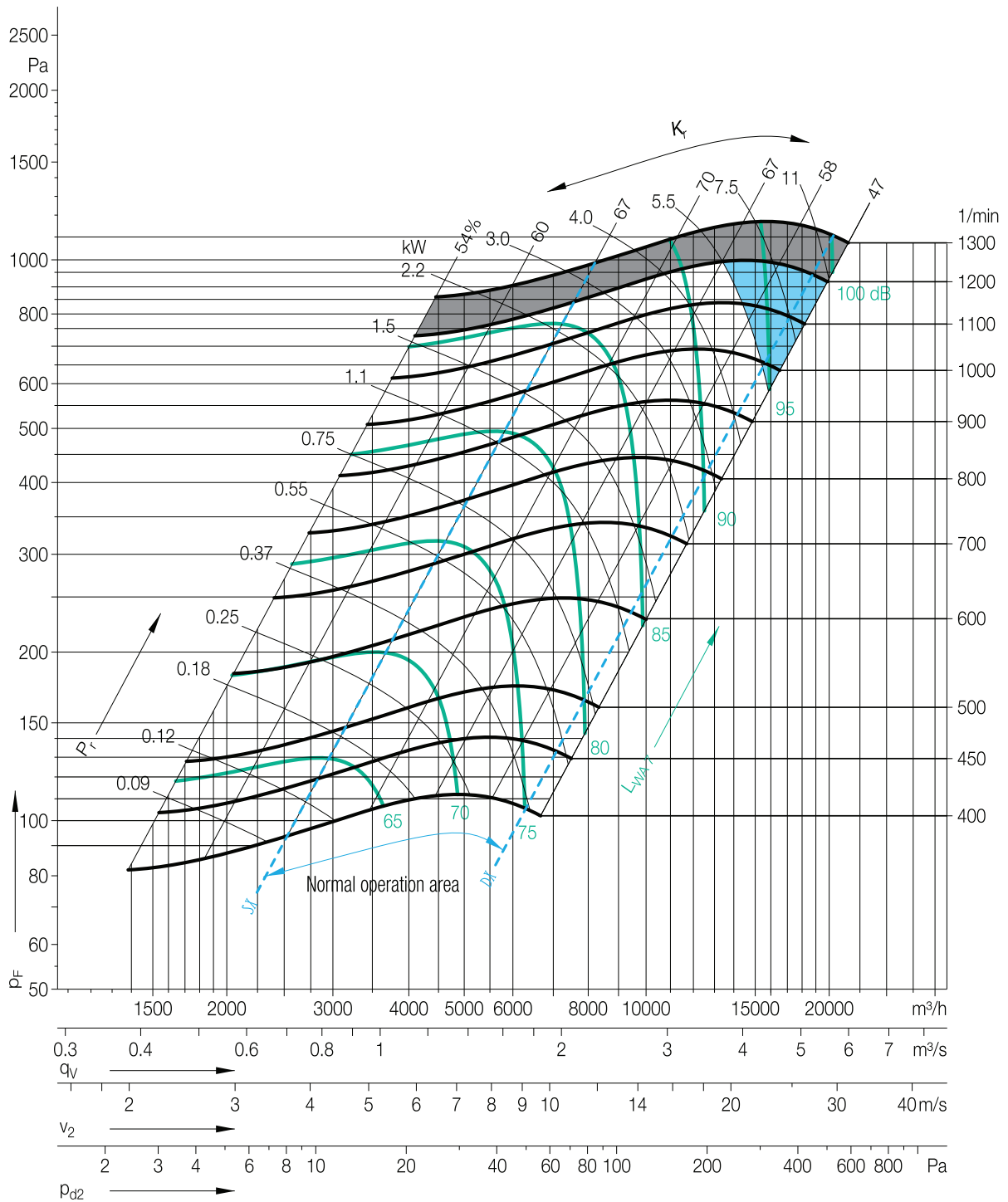




RCAT - 12 / 12

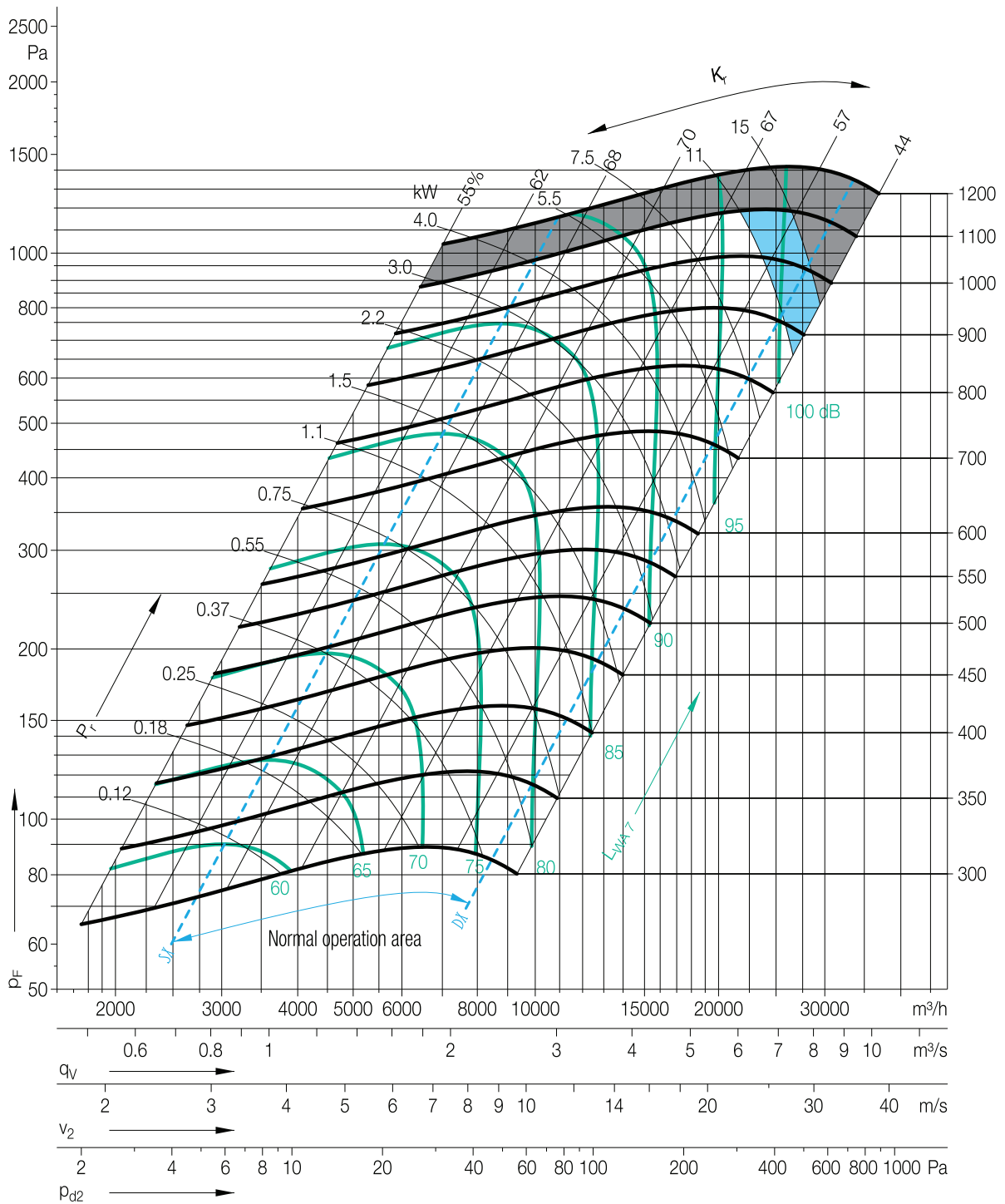


RCAT - 15 / 15





RCAT - 18 / 18



Discover the potential



NOT _____

A series of horizontal lines for writing or drawing, filling the majority of the page below the 'NOT' header.

ACTIVENT®

Halkalı Merkez Mahallesi
Şehit Yılmaz Özdemir Caddesi
Sanayi Sokak No: 4
Küçükçekmece, İstanbul, Türkiye

P: +90.212 698 02 25

P: +90.212 698 02 26

P: +90.212 565 73 03

info@activent.com.tr

www.activent.com.tr

