

# GÜÇLÜ BİR GELECEK İÇİN STRONGER FOR THE FUTURE



[www.activent.com.tr](http://www.activent.com.tr)



## ACTIVENT®

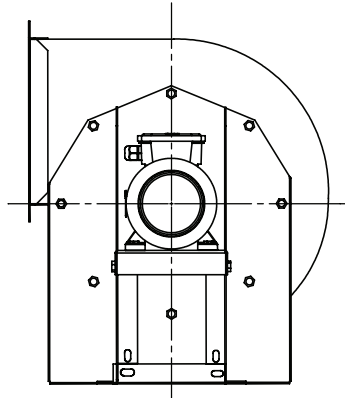
ÜRÜN KATALOĞU  
PRODUCT CATALOGUE



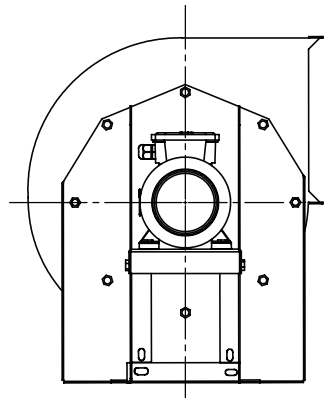


**RADYAL FANLAR**  
**RADIAL FANS**

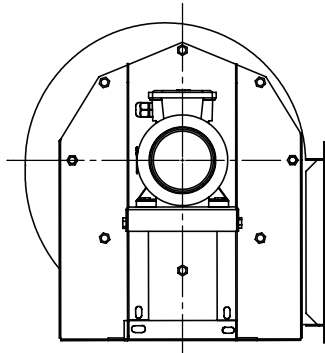
## RADYAL FAN YÖNLERİ RADIAL FAN DIRECTIONS



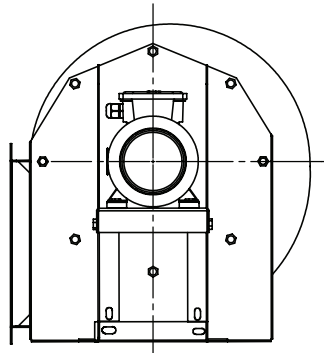
L180



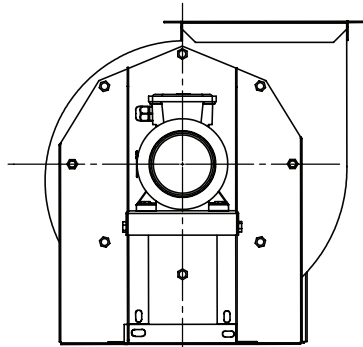
R180



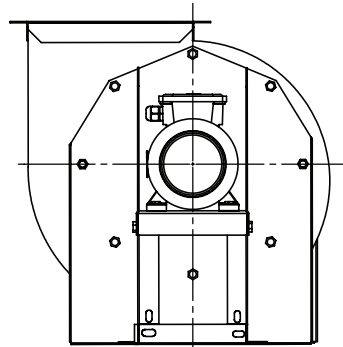
L270



R270

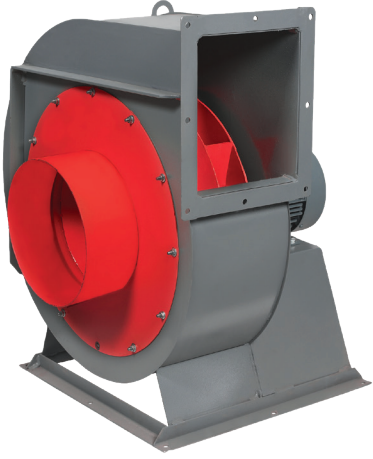


L090



R090

# 3 RADYAL FANLAR RADIAL FANS



## REUM

GERİYE EĞİMLİ VE SEYREK KANATLI,  
DİREKT AKUPLE, TEK EMİŞLİ, RADYAL FANLAR  
SINGLE SUCTION, INDUSTRIAL RADIAL FANS  
(BACKWARD CURVED)  
MEDIUM PRESSURE & HIGH PRESSURE

**REUM** orta ve yüksek basınç sistemleri için tasarlanmış bu fanlar her türlü tesis havalandırmasında kullanılabilirler. Özellikle toz toplama sistemleri için uygundur. Kanat yapısı seyrek oluşu sayesinde pervane temizliği kolaydır. Yüksek devir sayısı sayesinde güçlübasınç kayıplarını yenerler.

#### MALZEME

Gövdesi; DKP sacdan imal edilmiştir. Radyal Fan. Geriye eğimli kanat yapısı ile DKP sacdan üretilmiştir.

#### HIZ KONTROLÜ

Opsiyonel olarak frekans inverteri ile sağlanabilirler.

#### KULLANIM ALANLARI

Bu tip fanlar tozlu ve içinde tanecik bulunduran havanın, testere tozunun, tahta ve metal talaşlarının emilmesinde kullanılır. Bununla birlikte çimento, seramik, yem fabrikalarında, tekstil, kimya endüstrilerinde pnömatik nakil için ve zararlı havanın bir yerden bir yere taşınması gereken tüm uygulamalarda kullanılır.

**REUM** for medium and high pressure systems These fans designed for all kinds of facilities They can be used in ventilation. Especially for dust collection systems suitable. The wing structure is sparse Thanks to the propeller cleaning is easy. Powerful thanks to high speed They overcome pressure losses.

#### MATERIAL

Its body is made of DKP sheet metal. Radial Fan. With a backward-inclined wing structure Made of DKP sheet metal.

#### SPEED CONTROL

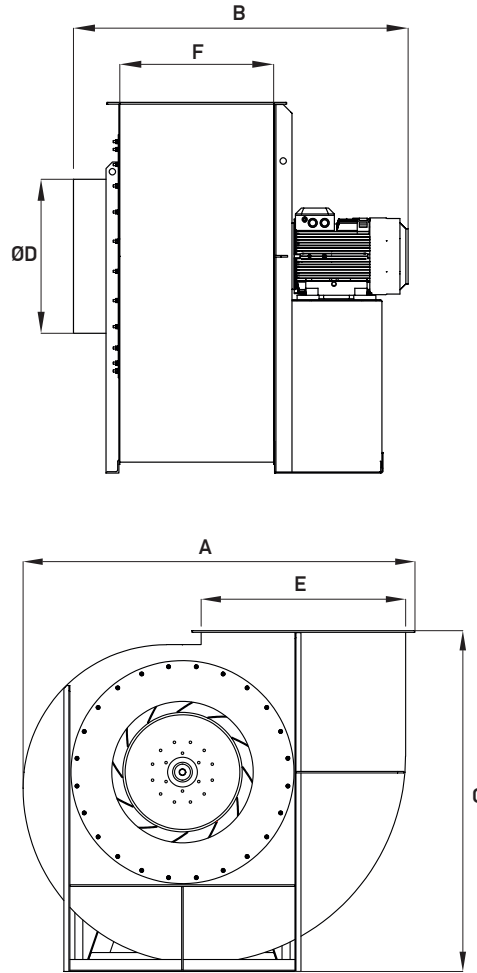
Optionally with frequency inverter they can be provided.

#### USAGE AREAS

This type of fans is dusty and has particles inside containing air, sawdust, wood and metal shavings. However, cement, ceramic, feed factories, textile, chemical industries for pneumatic conveying and all that need to move from place to place used in applications.

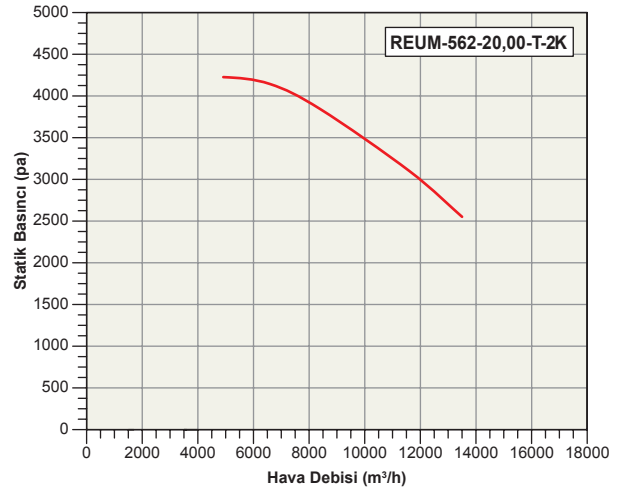
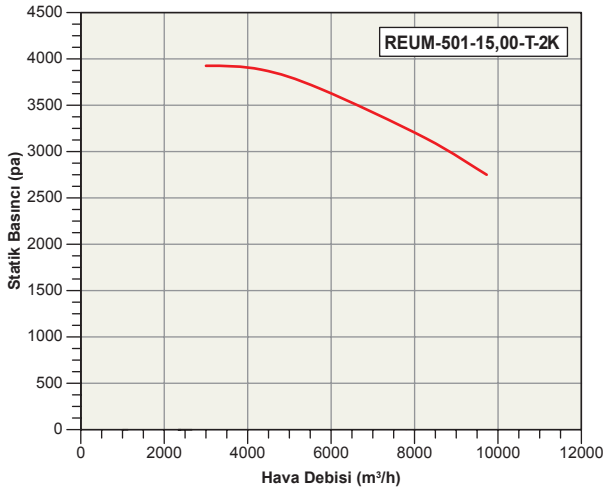
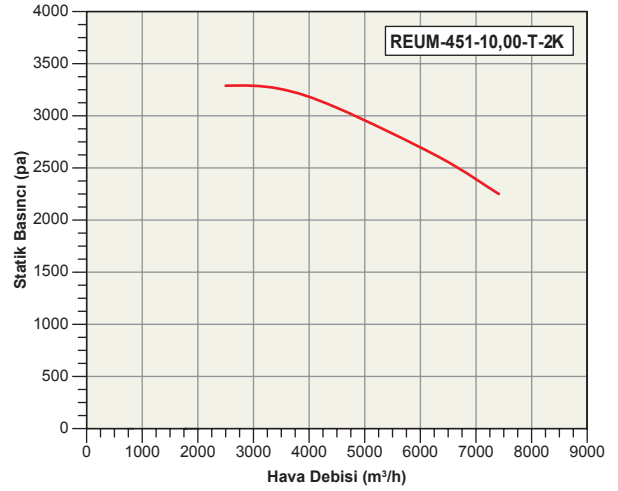
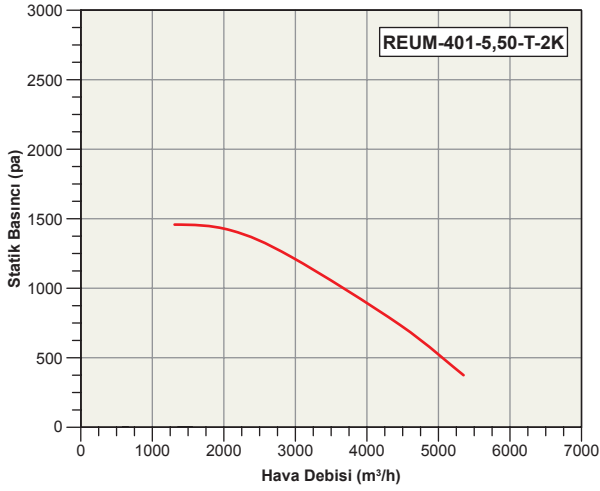
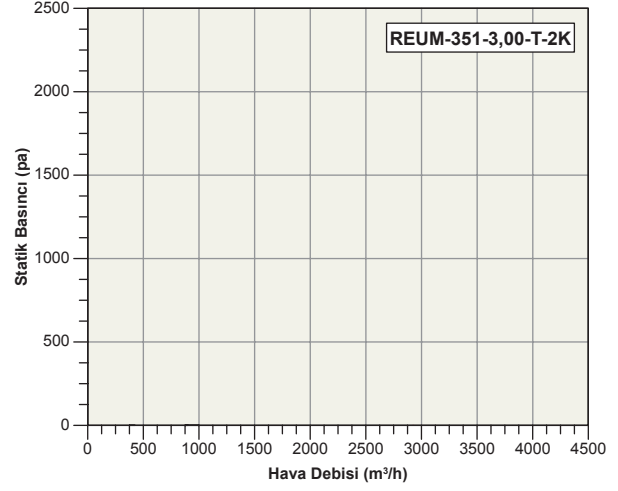
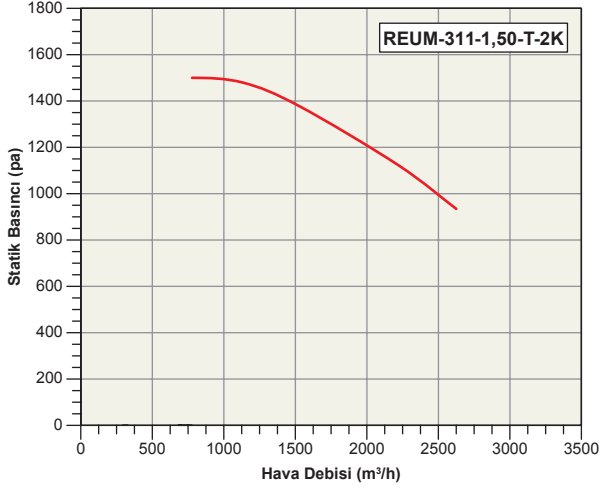
Tip/Kod Type/Code	Elektrik Motoru / Electrical Motor			Devir Speed (d/d) (rpm)	Max. Debi Air Flow m <sup>3</sup> / h	Max. Basınç Kaybı Pressure Pa
	Voltaj Voltage	Güç Power				
	(V)	(HP)	(kW)			
REUM-311-1,50-T-2K	380	1,50	1,10	2.880	800 / 2700	1450 / 900
REUM-351-3,00-T-2K	380	3,00	2,20	2.880	1350 / 3750	1950 / 1250
REUM-401-5,50-T-2K	380	5,50	4,00	2.880	1750 / 5500	2500 / 1300
REUM-451-10,0-T-2K	380	10,00	7,50	2.910	2500 / 7500	3250 / 2200
REUM-501-15,0-T-2K	380	15,00	11,00	2.945	3500 / 9500	3900 / 2800
REUM-562-20,0-T-2K	380	20,00	15,00	2.945	4200 / 13500	4100 / 2500
REUM-561-25,0-T-2K	380	25,00	18,50	2.950	5500 / 15000	4700 / 2800
REUM-633-30,0-T-2K	380	30,00	22,00	2.950	6700 / 16800	4900 / 2800
REUM-632-40,0-T-2K	380	40,0	30,00	2.970	7500 / 19000	5500 / 3400
REUM-631-50,0-T-2K	380	50,0	37,0	2.970	7700 / 21000	5900 / 3750

TEKNİK ÖLÇÜLER / TECHNICAL DIMENSION

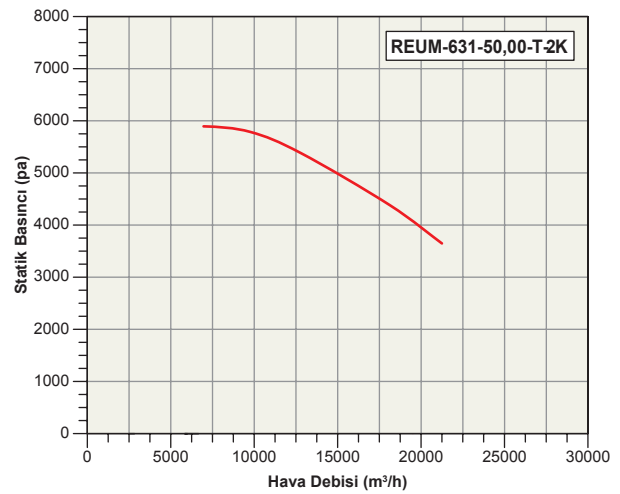
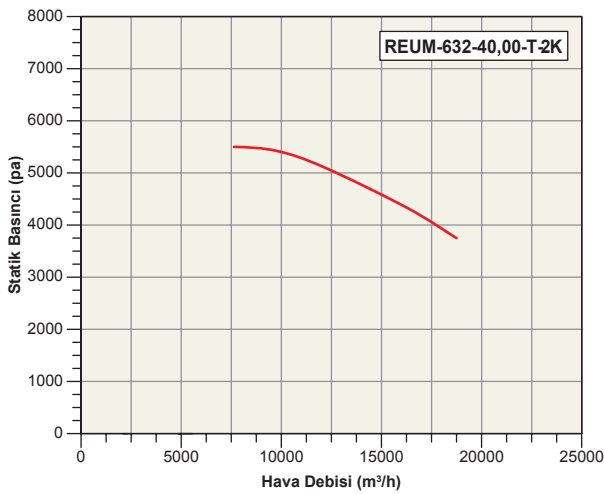
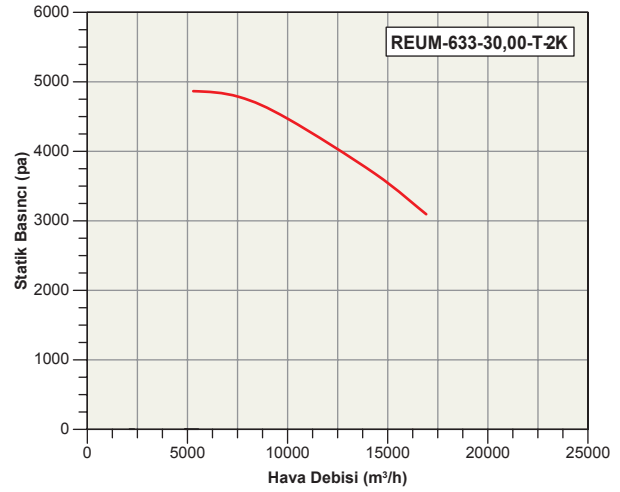
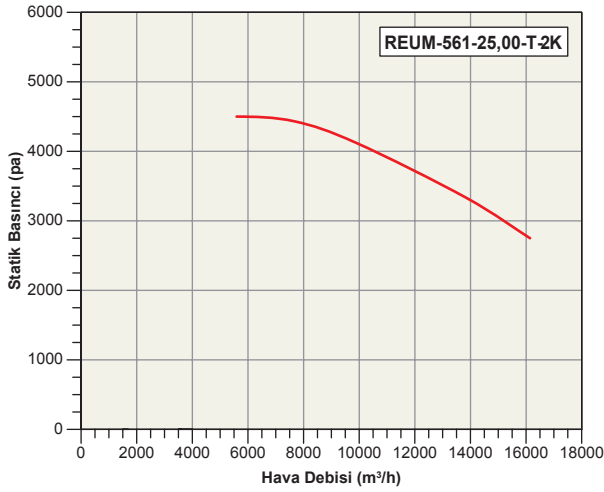


Tip/Kod Type/Code	Ölçüler / Sizes (mm)					
	A	B	C	D	E	F
REUM-311-1,50-T-2K	650	600	610	Ø 255	200	180
REUM-351-3,00-T-2K	735	650	715	Ø 290	280	200
REUM-401-5,50-T-2K	820	710	800	Ø 320	315	225
REUM-451-10,0-T-2K	910	850	895	Ø 360	355	250
REUM-501-15,0-T-2K	1.010	900	985	Ø 405	400	280
REUM-562-20,0-T-2K	1.130	935	960	Ø 455	450	315
REUM-561-25,0-T-2K	1.130	935	960	Ø 455	450	315
REUM-633-30,0-T-2K	1.270	1.085	1.080	Ø 505	500	355
REUM-632-40,0-T-2K	1.270	1.130	1.080	Ø 505	500	355
REUM-631-50,0-T-2K	1.270	1.130	1.080	Ø 505	500	355

## TEKNİK ÖLÇÜLER / TECHNICAL DIMENSION



TEKNİK ÖLÇÜLER / TECHNICAL DIMENSION



NOT \_\_\_\_\_

\_\_\_\_\_

\_\_\_\_\_

\_\_\_\_\_

\_\_\_\_\_

\_\_\_\_\_

\_\_\_\_\_

\_\_\_\_\_

\_\_\_\_\_

\_\_\_\_\_

\_\_\_\_\_

\_\_\_\_\_

\_\_\_\_\_

\_\_\_\_\_

\_\_\_\_\_

\_\_\_\_\_

\_\_\_\_\_

\_\_\_\_\_

\_\_\_\_\_

\_\_\_\_\_

\_\_\_\_\_

\_\_\_\_\_

\_\_\_\_\_

\_\_\_\_\_

\_\_\_\_\_

\_\_\_\_\_

\_\_\_\_\_





**ACTIVENT®**

Halkalı Merkez Mahallesi  
Şehit Yılmaz Özdemir Caddesi  
Sanayi Sokak No: 4  
Küçükçekmece, İstanbul, Türkiye

**P:** +90.212 698 02 25

**P:** +90.212 698 02 26

**P:** +90.212 565 73 03

[info@activent.com.tr](mailto:info@activent.com.tr)

[www.activent.com.tr](http://www.activent.com.tr)

